

UNISCAPE Research and Teaching

Università degli Studi di Napoli Federico II

- **REPRESENTATIVE(S) OF UNISCAPE:** Elvira Petroncelli
- **POSITION:** Professore Ordinario
- **Email:** elvira.petroncelli@unina.it
- **UNIVERSITY:** Università degli Studi di Napoli
- **DEPARTMENT(S) INVOLVED:** Dipartimento di Ingegneria Civile, Edile e Ambientale (Dipartimento di riferimento) e inoltre: Architettura, Studi Umanistici, Giurisprudenza, Scienze Politiche, Centro Museale delle Scienze Agrarie, Scienze della Terra, dell'Ambiente e delle Risorse

EDUCATION PROGRAMMES

Bachelor or equivalent:

-Pianificazione territoriale, urbanistica e paesaggio ambientale

Master:

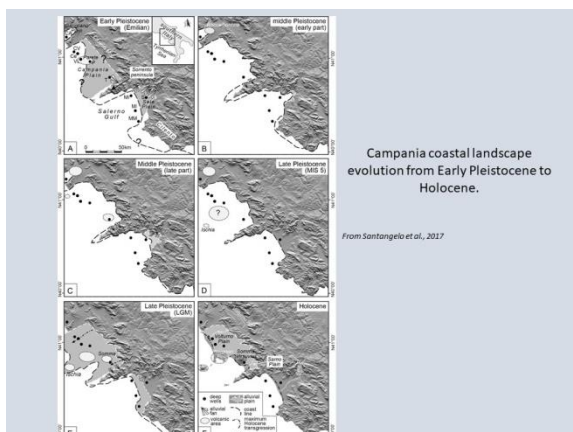
- Geology and applied Geology; Architettura; Ingegneria Edile-Architettura

Post graduate | Specialization | Ph.D. :

- Master Erasmus Mundus MaCLands – Master of Cultural Landscapes (<http://www.maclands.fr/>); Master Erasmus Mundus JDM “DYCLAM – Dynamics of Cultural Landscapes and Heritage Management (<http://www.dyclam.eu/fr/>); Ph.D. Ingegneria dei Sistemi Idraulici, di Trasporto e Territoriali (indirizzo: Governo dei Sistemi Territoriali dal XX al XXVIII ciclo), Ph.D. Ingegneria dei sistemi Civili (dal XIX ciclo ad oggi)

RESEARCH ON LANDSCAPE

main issues/ topics of research



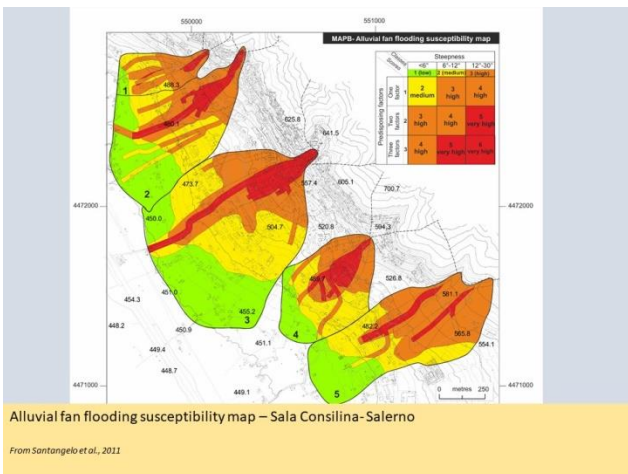
01 Regional geomorphology, Quaternary geology, Coastal Geomorphology

In the field of Regional Geomorphology and Quaternary Geology the researches have dealt with the geomorphological and neotectonic evolution of Southern Apennine chain during Quaternary times. The main topics concerned the morphostructural analysis of the chain and the reconstruction of its geomorphological evolution during Quaternary times.

Particular attention was given to the palaeo-environmental reconstruction of the coastal plains and the intramontane basins of the region. Synthetic papers on the long term landscape evolution of Southern Apennine chain have been published. As regard as coastal geomorphology the main sea level eustatic fluctuations along the Campania coast during the last high-stands (OIS 7 and 5) were reconstructed.

02 Geological and geomorphological thematic mapping

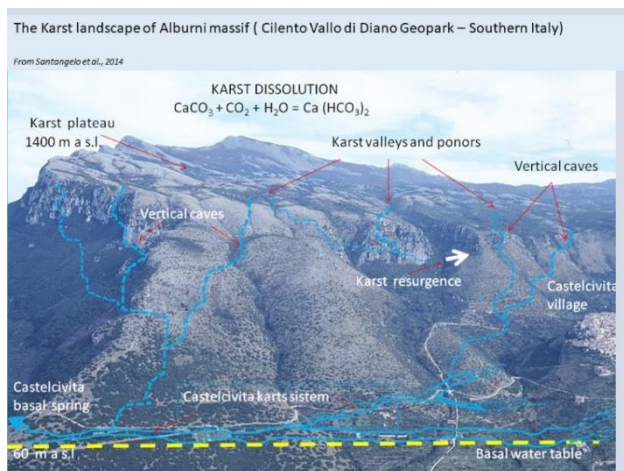
In the field of thematic mapping several base geological and geomorphological maps, at different scales (1: 25k – 1: 5k) have been produced for many areas of Southern Apennines (i.e. Vallo di Diano, Bianco river valley, High Volturmo river valley, Low Calore river valley, etc). Prof. Santangelo was also responsible for the geological mapping of Quaternary deposits, Caserta Est Sheet, New Geological Map of Italy (Carg project). Other maps have been focused on territorial planning and on the



evaluation of alluvial fan flooding hazard.

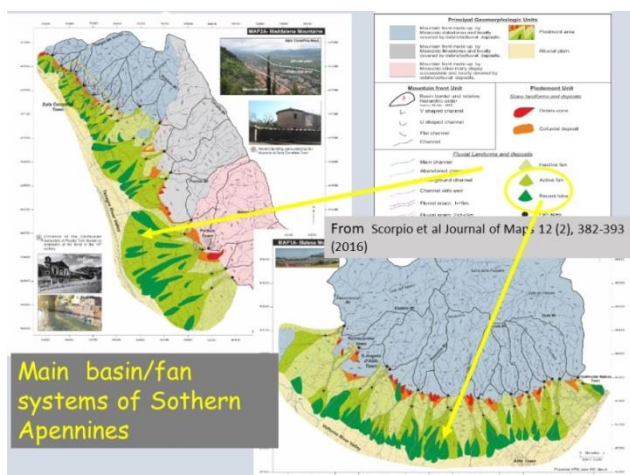
03 Karst

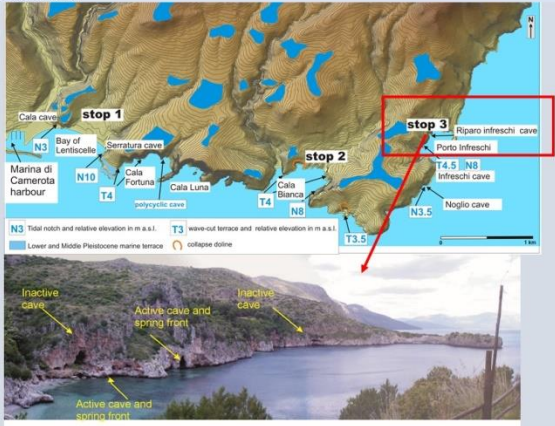
In the field of karst studies the genesis and analysis of the main karst morphologies of Southern Apennines have been treated. Synthetic papers on karst systems of Campania region and on the valorisation of karst areas have been published. Recently the problem of relationships between fluid circulation, active tectonics, karst dissolution and travertine deposition has been faced.



04 Applied Geomorphology: alluvial fan flooding, alluvial hazard in small catchments

In the field of applied geomorphology the main examined topics have dealt with geomorphological hazard evaluation in small watersheds and alluvial fans systems (morphometric characterization of Southern Apennines basin/fan systems; magnitude evaluation of alluvial fan flooding processes, characterization of flash flood etc).





05 Geosites and Geotourism

Researches in this field have been focused on geosites individuation (Cilento- Vallo di Diano National Park, Plaegrean Fields Regional park: http://www.edu-geo.it/escursioni/Campania/scheda_introduttiva_ca1.html) and valorisation (geo-itineraries and geo-tourism) with the main aim of using geological heritage as a tool for educational and touristic development.

06 Criteria for building a model of integrated tourist development: an experimentation on the Cilento area

One of the main characteristics of tourist sector can be found in its cross relationship with other economic activities with which it shows many interdependences. The tourist-targeted exploitation of a territory moves together with the overall development of all the activities characterizing the territory itself. The key idea of the research project is that the heritage of territorial resources, landscapes and competences in Cilento area (South of Italy) represents the potential competitive

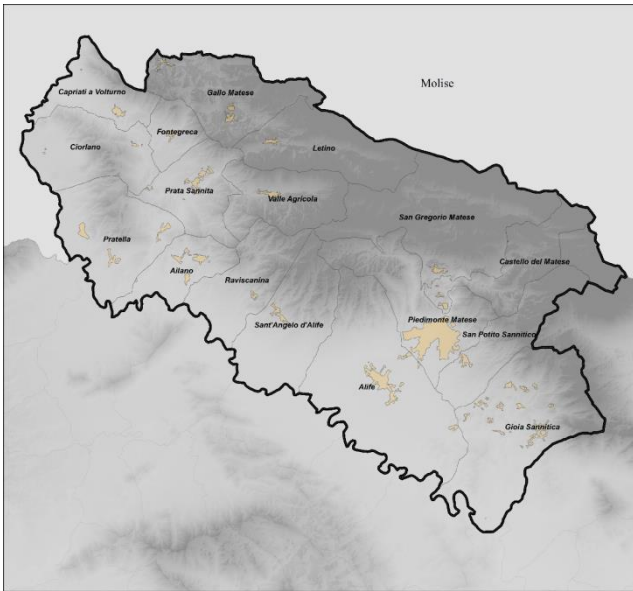
advantage in tourist field. In order to transform those potentials into effective competitiveness, the present resources should be joined together with the opportunities issuing from medium-long term trends, which should be found in the national and international market.



07 Recovering River Landscapes

The research has aimed to investigate the issue of the re-appropriation and the recovery of river landscapes, often compromised and degraded as a result of human or natural changes. Starting from the case of the Campania region, the research has set out as a laboratory where it was possible to test the combination of appropriate methods and technics to actively plan river landscapes. In this framework, adopting a landscape restoration approach has

suggested useful hints to return landscapes to their natural conditions, counting on resilience. At the same time, the research has highlighted the importance of enhancing local communities' resources in order to reinterpret and redefine landscapes.



08 La Convenzione Europea del Paesaggio e il Paesaggio Storico Urbano: uno strumento di supporto alle decisioni nella definizione di progetti di intervento

The research has been focused on Historic Urban Landscape aiming to define a tool to support decision making in territorial transformation processes. The work has been developed under the idea that the minor historic centres may keep a considerable share of cultural heritage and that their exploitation results in a real development opportunity for European countries. The research proposes a workflow directly available to planners and decision makers, based on configurational analysis, and tested in a small area in the South of Italy.

09 Manuale del colore per la città di Napoli (convenzione con Comune Napoli)

10 Criteri tecnico-scientifici per gli interventi sull'architettura ed il paesaggio rurale in Campania (convenzione con MIBACT)

11 Green infrastructures (Progetto STRESS Metropolis)

12 Restauro paesaggistico e ambientale (Ricerca FARO I e FARO II)

13 Contratti di fiume (collaborazione con Politecnico di Torino)

TOPICS

- LOCAL COMMUNITIES
- PERCEPTION
- IDENTITY
- EDUCATION
- SUSTAINABLE TOURISM